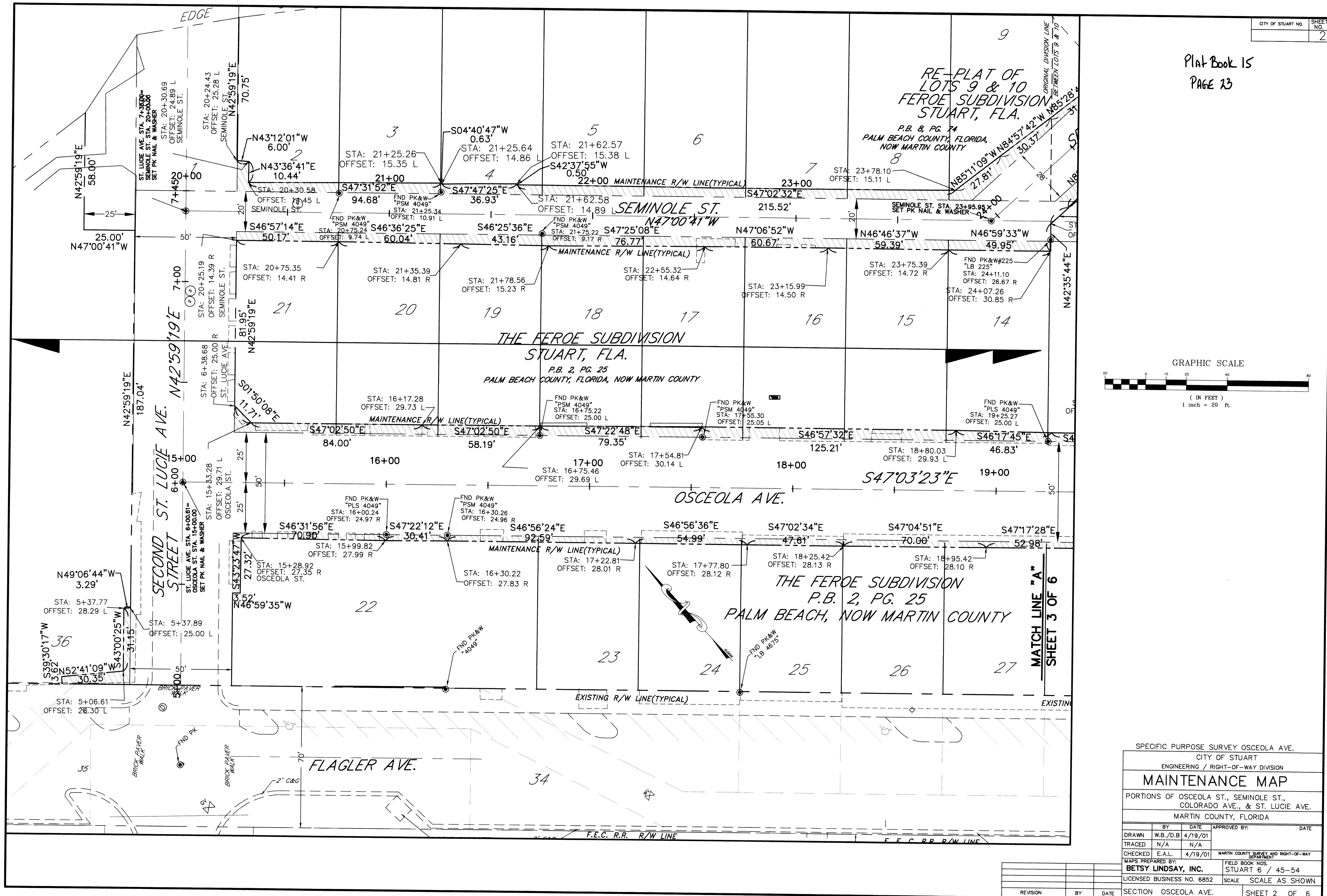
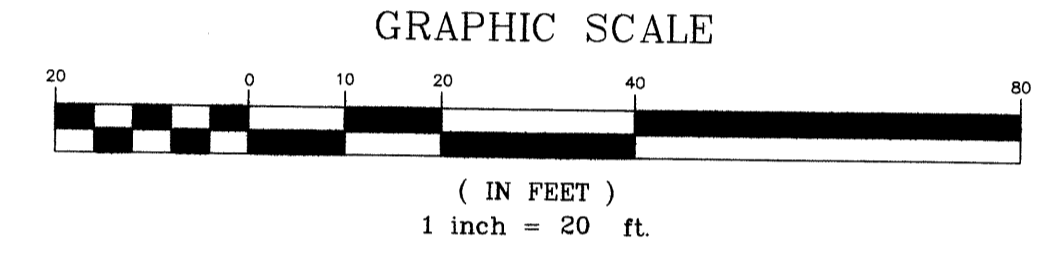


RE-PLAT OF
LOTS 9 & 10
FEROE SUBDIVISION
STUART, FLA.

P.B. 8, PG. 74
PALM BEACH COUNTY, FLORIDA,
NOW MARTIN COUNTY

THE FEROE SUBDIVISION
STUART, FLA.
P.B. 2, PG. 25
PALM BEACH COUNTY, FLORIDA, NOW MARTIN COUNTY

THE FEROE SUBDIVISION
P.B. 2, PG. 25
PALM BEACH, NOW MARTIN COUNTY



SPECIFIC PURPOSE SURVEY OSCEOLA AVE.
CITY OF STUART
ENGINEERING / RIGHT-OF-WAY DIVISION

MAINTENANCE MAP

PORTIONS OF OSCEOLA ST., SEMINOLE ST.,
COLORADO AVE., & ST. LUCIE AVE.
MARTIN COUNTY, FLORIDA

BY	DATE	APPROVED BY:	DATE
DRAWN	W.B./D.B. 4/19/01		
TRACED	N/A		
CHECKED	E.A.L. 4/19/01	MARTIN COUNTY SURVEY AND RIGHT-OF-WAY DEPARTMENT	
MAPS PREPARED BY:		FIELD BOOK NOS.	
BETSY LINDSAY, INC.		STUART 6 / 45-54	
LICENSED BUSINESS NO. 6852		SCALE SCALE AS SHOWN	

REVISION	BY	DATE	SECTION	SHEET
			OSCEOLA AVE.	2 OF 6